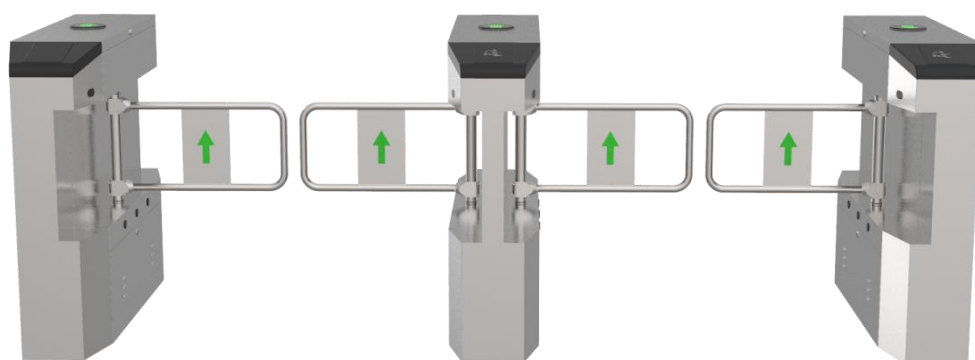
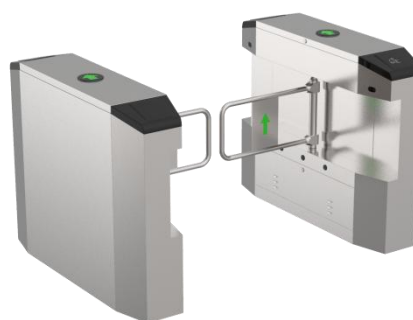




## E343 Product Show



two-channel

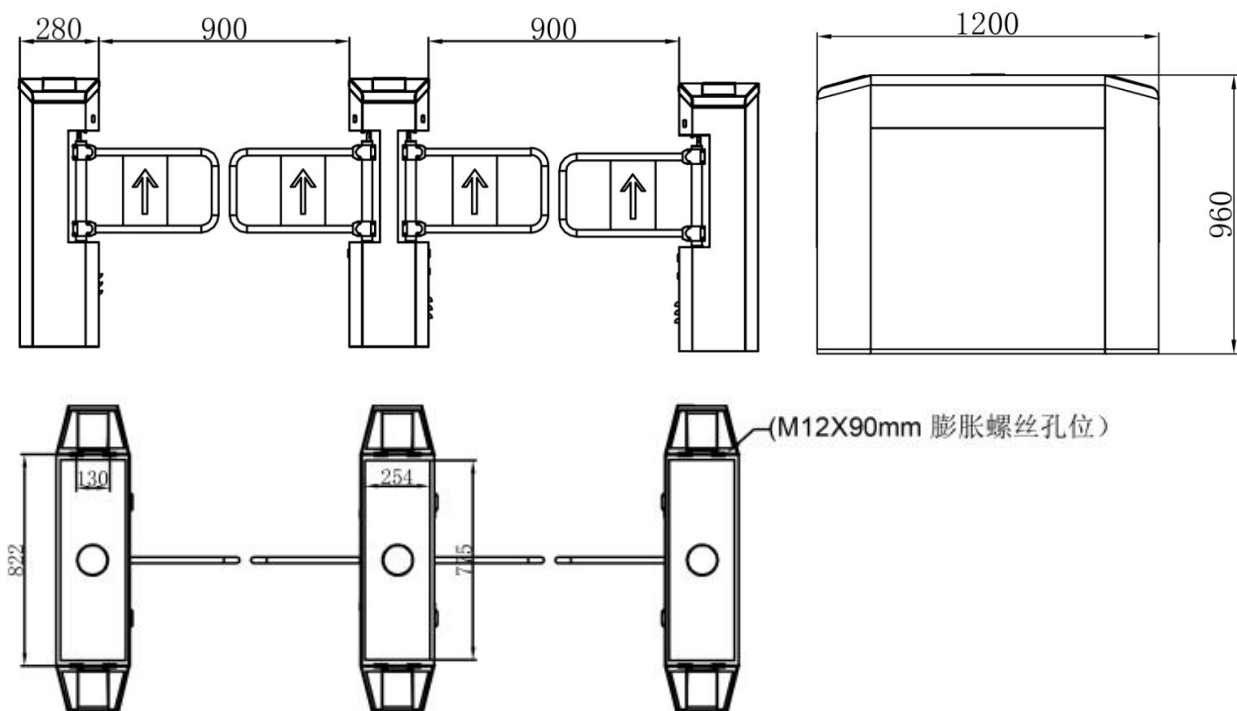


Single channel

## Functions & Features

- 1、 Reasonable and reliable design, low noise, smooth operation and long service life;
- 2、 With functions of anti-tail, anti-reverse pass and so on;
- 3、 Card can be set "with memory" or "without memory" functions;
- 4、 With automatic reset function, i.e. after having access to the gate, the gate automatically restores to the locked state if not pass within the time set;
- 5、 With infrared anti-clip function (anti-clip when gate is open or running);
- 6、 Compatible with IC, ID card, scanning and face recognition,etc.
- 7、 Two modes of operation are available: open or closed.
- 8、 Various working modes are available, including two-way card reading and one-way card reading,etc.

## Product Size



## Parameter

Size (L*W*H)	1200*280*960mm
Pass width	600-1100mm
Power	50W
Material	Top $\delta=1.2\text{mm}$ / body $\delta=1.0\text{mm}$ SUS304
Bar Material	SUS304
Movement	Brushless Movement of Swing Gate
Infrared sensor	5 pairs
Indicator Light	Dynamic indicator light
Drive Unit	Brushless DC Motor 90K 40W
Power Supply	24V 150W
Control Unit	Brushless control system
Communication Interface	Dry contact & RS485
Pass rate	35-50 persons/minute
Temperature	-20°C~+70°C
Humidity	$\leq 90\%$ No condensation
IP	IP4X
Environment	Indoor and outdoor (outdoor with canopy)

## Case share



Turboo Automation Co., Ltd

**Scan our QR  
code to follow**



official accounts



Telephone: 86-0755-23305213; 86-0755-29809981;



Head Address : 1st-4th Floor,Building#1,Guanjie Factory area,guanguang Road #1134 , Guihua Community,Guanlan Street,Longhua District,Shenzhen ;

Production base: Factory Building No.1,Zhongzhi Science and Technology Park ,National High-tech Zone,Fuzhou City,Jiangxi ;